

• Electrical Specifications

Frequency Range: 2400-2483Mhz

VSWR: ≤2.

Gain: 5dBi

Polarization Type: Vertical

Rated Power: 50W

Input Impedance: 50 Ohm

• Mechanical Specifications

Radome Materials: Plastic

Connector: SMA male

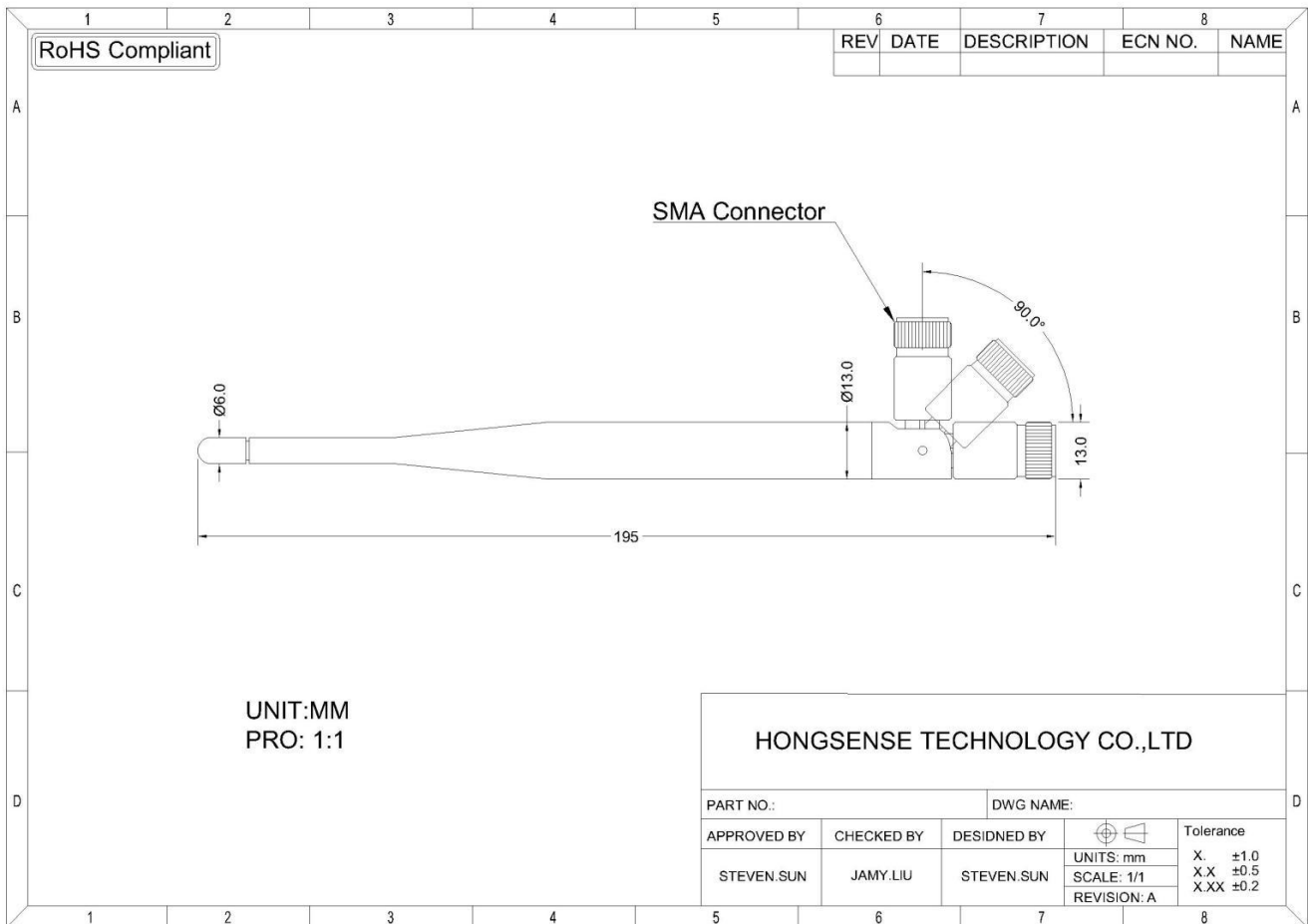
Antenna Length: Ø13*195mm

Radiator: Cuprum

Working Temp: -40°C~+60°C

Humidity: 5%-95%RH

Weight: 22g



• VSWR

