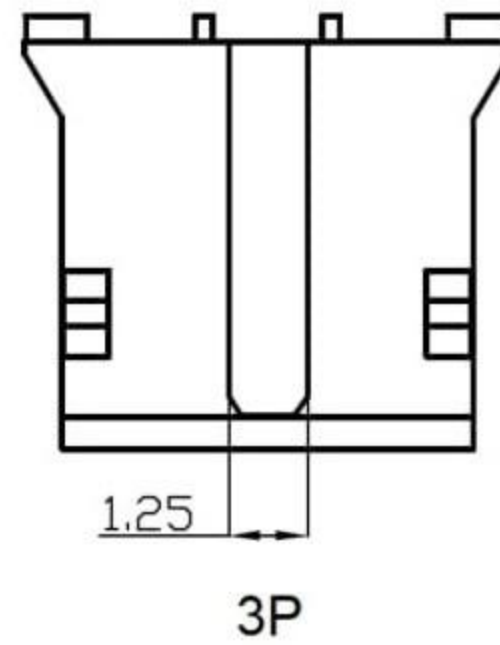
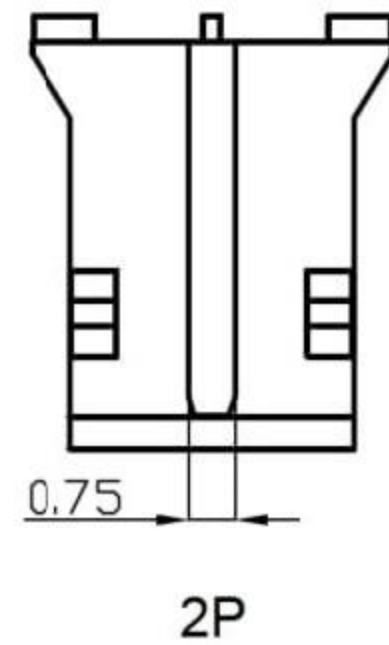
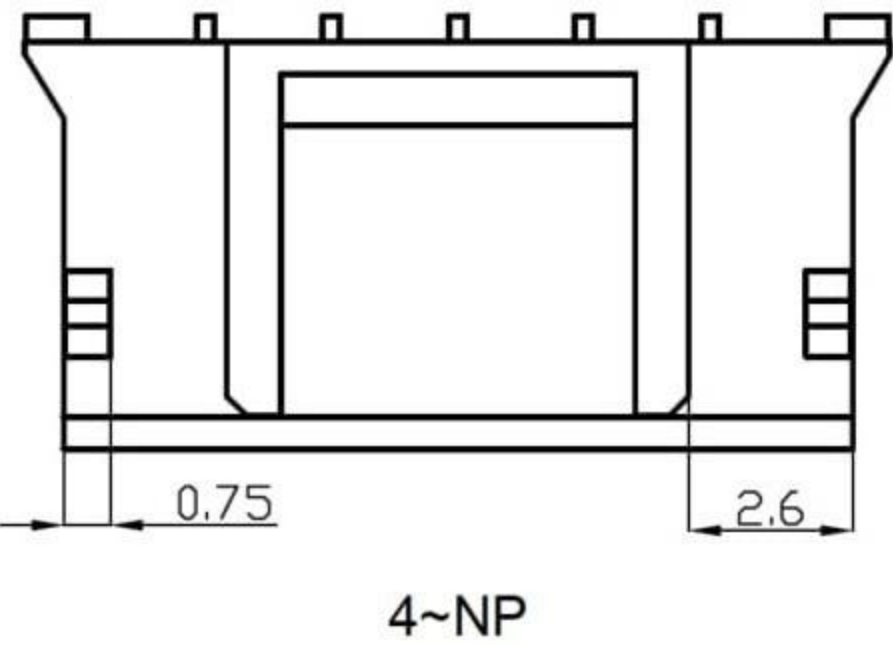
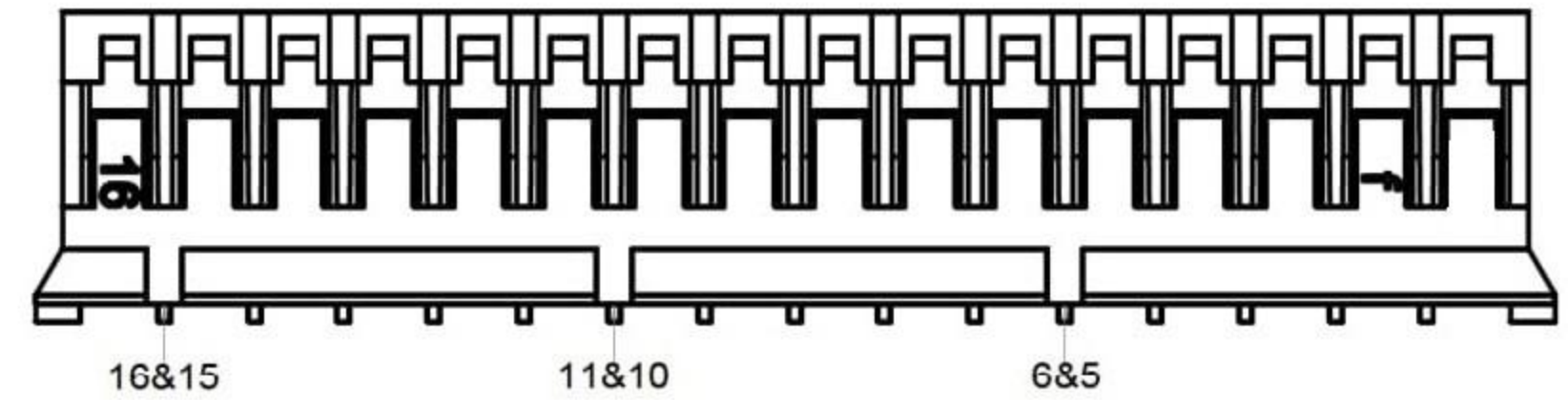
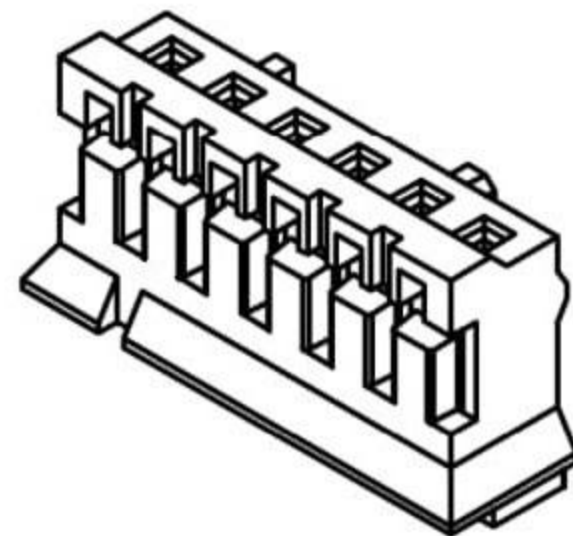
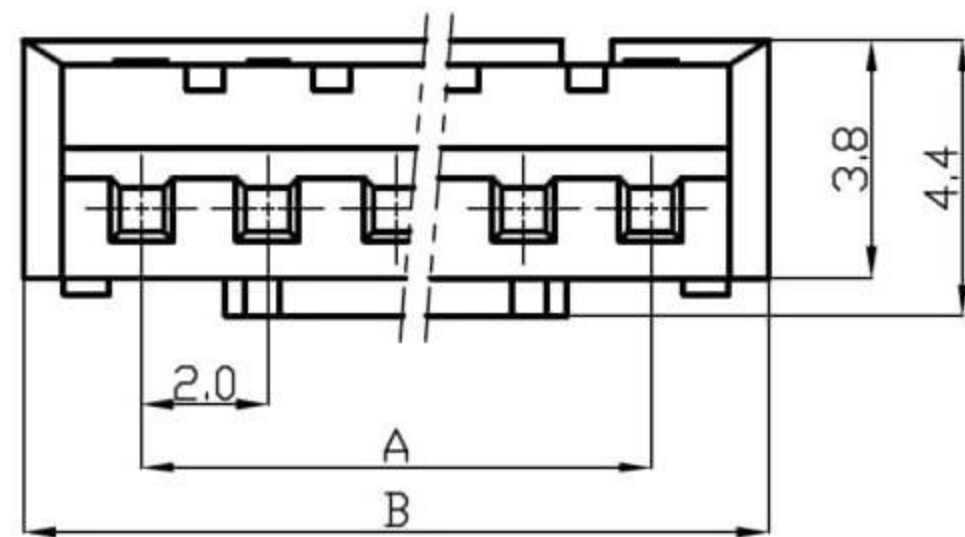
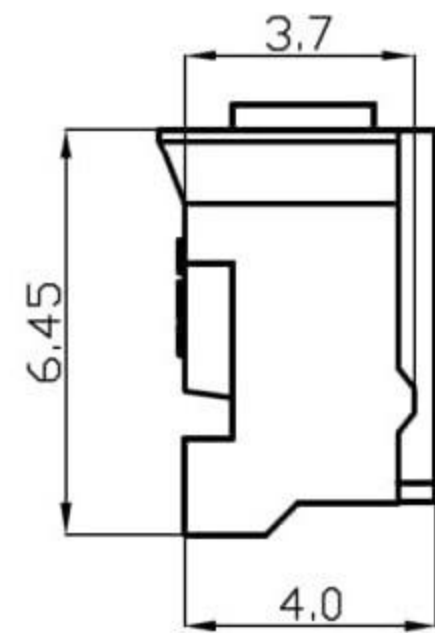
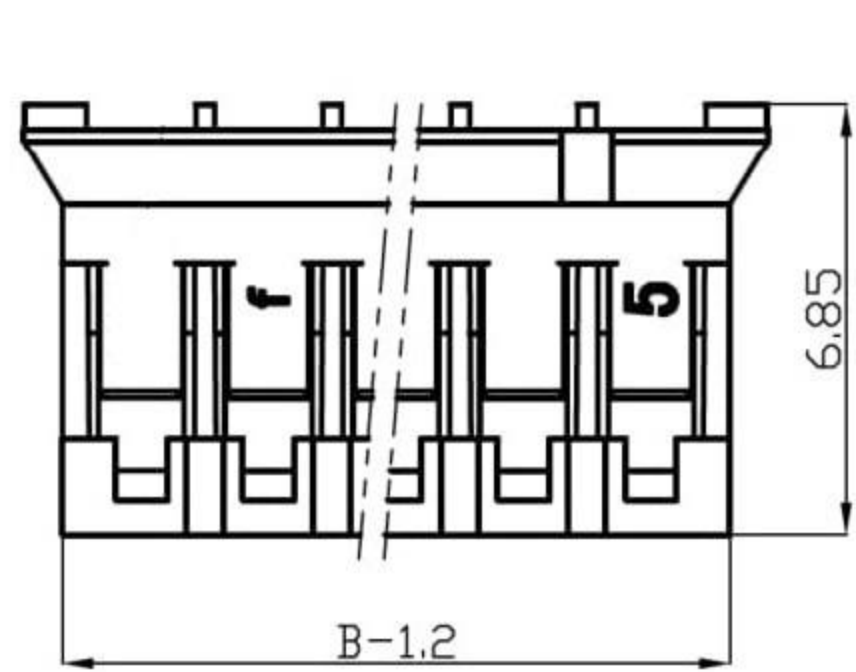




15 14 13 12 11 10 9 8 7 6 5 4 3 2 1

M L K J H G F E D C B A

M L K J H G F E D C B A



Poles	Dimensions mm	
	A	B
2	2.00	5.75
3	4.00	7.75
4	6.00	9.75
5	8.00	11.75
6	10.00	13.75
7	12.00	15.75
8	14.00	17.75
9	16.00	19.75
10	18.00	21.75
11	20.00	23.75
12	22.00	25.75
13	24.00	27.75
14	26.00	29.75
15	28.00	31.75
16	30.00	33.75

Housing		PA66 (UL94V-0/V-2)		White	
X.° ±3° X.X° ±0.5°					
>0-3	>3-18	>18-50	>50-120		
±0.12	±0.15	±0.3	±0.5	MM Only	METRIC A4
					

15 14 13 12 11 10 9 8 7 6 5 4 3 2 1