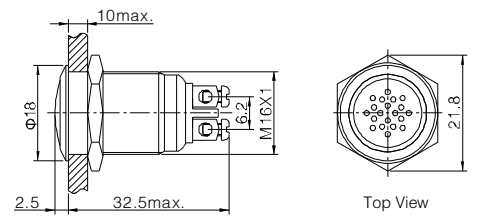


GQ16,19

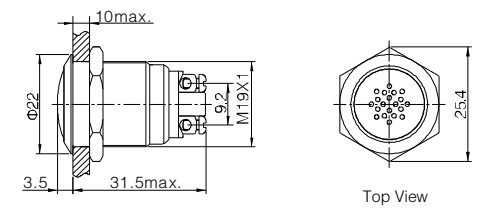
Buzzer



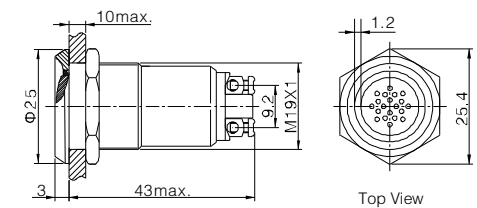
- ◎ Φ 16mm Diameter
- ◎ Sound Type(□): Continuous Buzz(M) / Incontinuous Buzz(JM)
- ◎ Voltage(▲): DC12V / DC24V
- ◎ Rated Current: ≤30mA
- ◎ Sound Intensity: ≥85dB(about 0.1Meter away) / ≥75dB(about 1Meter away)
- ◎ Crust Material(◎): Stainless steel(S)
- ◎ IP Degree: IP40,IK04



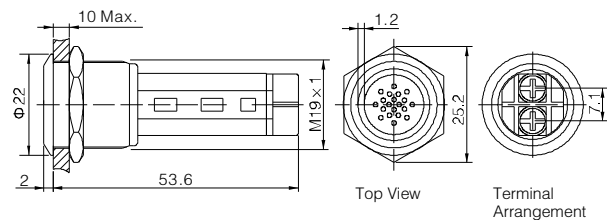
- ◎ Φ 19mm Diameter
- ◎ Sound Type(□): Continuous Buzz(M) / Incontinuous Buzz(JM)
- ◎ Voltage(▲): DC12V / DC24V
- ◎ Rated Current: ≤30mA
- ◎ Sound Intensity: ≥85dB(about 0.1Meter away) / ≥75dB(about 1Meter away)
- ◎ Crust Material(◎): Stainless steel(S)
- ◎ IP Degree: IP40,IK04



- ◎ Φ 19mm Diameter
- ◎ Sound Type: Flicker Buzzer
- ◎ Color(Δ): **R G Y O B W**
- ◎ Voltage(▲): DC12V / DC24V
- ◎ Rated Current: ≤30mA
- ◎ Sound Intensity: ≥85dB(about 0.1Meter away) / ≥75dB(about 1Meter away)
- ◎ Crust Material(◎): Stainless steel(S)
- ◎ IP Degree: IP40,IK04



- ◎ Φ 19mm Diameter
- ◎ Sound Type(■): Continuous Buzz(M) / Incontinuous Buzz(JM) / Flicker Buzzer(SM)
- ◎ Color(Δ): **R G Y O B W**
- ◎ Rated Voltage(▲): DC12V / DC24V / AC C110V / AC220V
- ◎ Sound Intensity: ≥85dB(about 0.1Meter away) / ≥75dB(about 1Meter away)
- ◎ Crust Material(◎): Stainless steel(S)
- ◎ IP Degree: IP40,IK04



	GQ16B-□/▲ GQ19B-□/▲ GQ19B-SM/Δ/▲ LAS1-AGQ-■/Δ/▲	Material	Voice Cover Stainless steel
		Body	Stainless steel
		Base	PBT
Panel Thickness	1 ~ 10mm(LAS1GQ)		
Torque	0.8Nm		
Terminal Type	Screw Terminal		
		RoHS	Made to order

ONPOW