

## SPECIFICATIONS

### Material

Insulator : PBT, glass reinforced, rated UL 94V-0

Contact : Phosphor Bronze

### Electrical

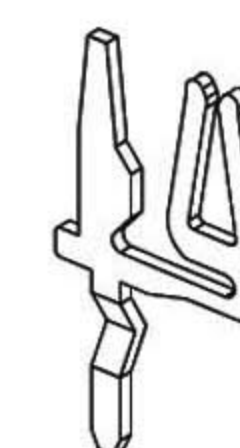
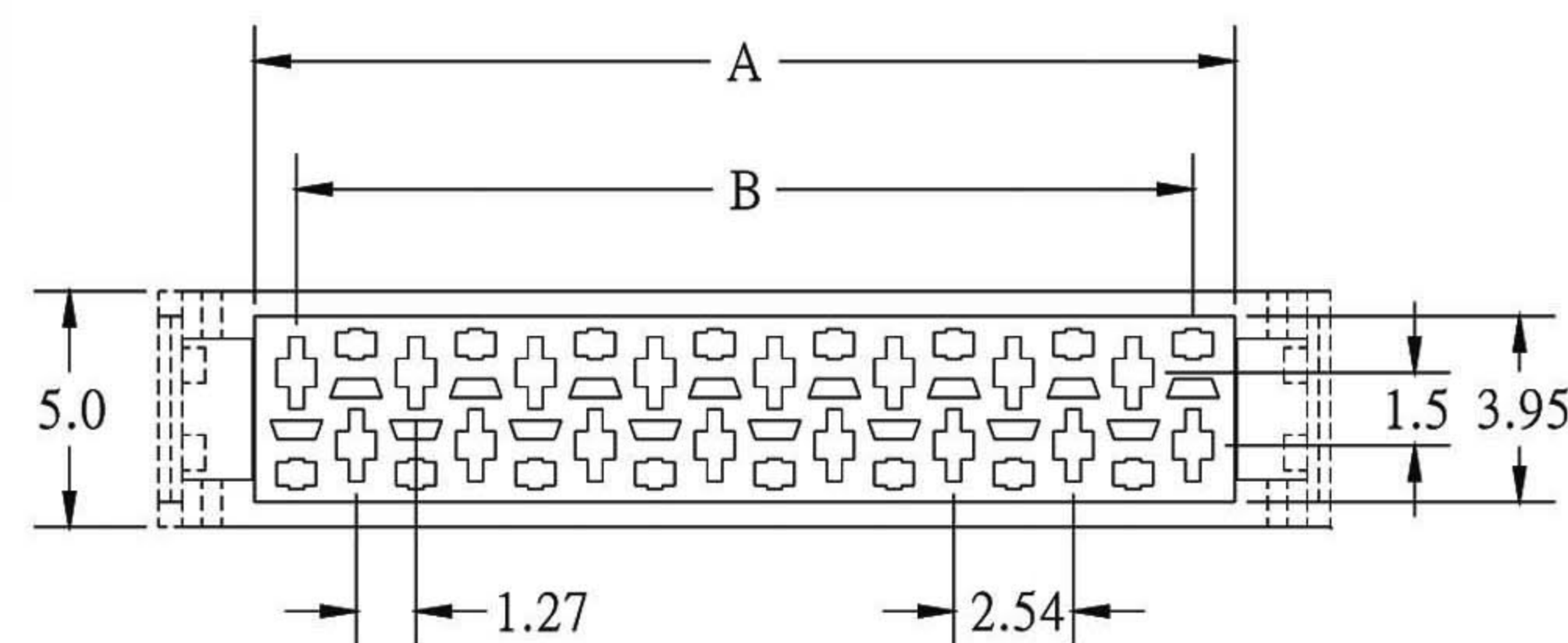
Current Rating : 1 Amp

Contact Resistance : 30 mΩ max.

Insulation Resistance : 3000 MΩ min.

Dielectric Withstanding Voltage : 500V AC for 1minute

Operating Temperature : -40°C to +105°C



POSITION	A	B	C	D
4	5.59	3.81	9.66	6.98
6	8.13	6.35	12.20	9.52
8	10.67	8.89	14.74	12.06
10	13.21	11.43	17.28	14.60
12	15.75	13.97	19.82	17.14
14	18.29	16.51	22.36	19.68
16	20.83	19.05	24.90	22.22
18	23.37	21.59	27.44	24.76
20	25.91	24.13	29.98	27.30
22	28.45	26.67	32.52	29.84
24	30.99	29.21	35.06	32.38
26	33.53	31.75	37.60	34.92

