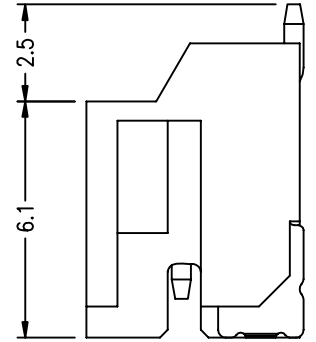
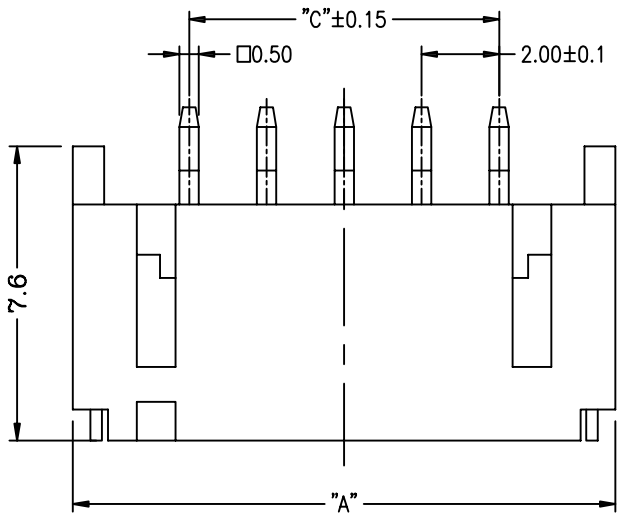


1

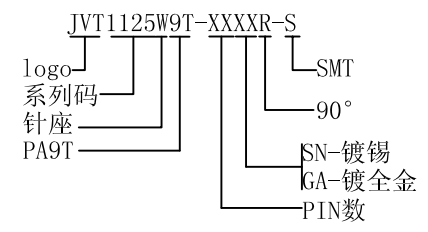


SPECIFICATION

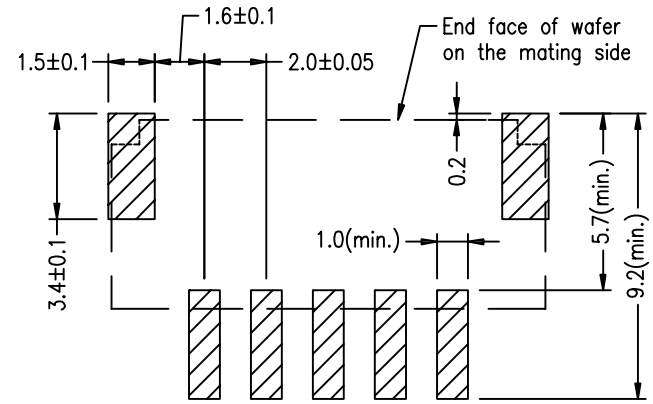
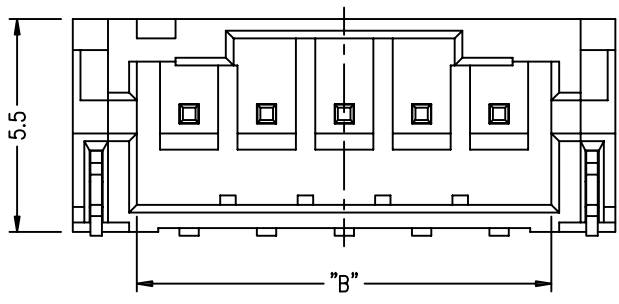
- Voltage rating: 100V AC, DC
- Current Rating: 2A, AC, DC
- Withstand voltage: 800V AC/minute
- Contact resistance: 10mΩ max
- Insulation resistance: 1000MΩ min
- Temperature range: -25° C ~ +85° C

WAFER

- Material: Base, PA9T UL94V-0
- Contact area, Brass Tin/Gold-plated
- Solder area, Phosphor Bronze Tin/Gold-plated



2



Poles	"A"	"B"	"C"
2P	8.0	4.7	2.0
3P	10.0	6.7	4.0
4P	12.0	8.7	6.0
5P	14.0	10.7	8.0
6P	16.0	12.7	10.0
7P	18.0	14.7	12.0
8P	20.0	16.7	14.0
9P	22.0	18.7	16.0
10P	24.0	20.7	18.0
11P	26.0	22.7	20.0
12P	28.0	24.7	22.0
13P	30.0	26.7	24.0
14P	32.0	28.7	26.0
15P	34.0	30.7	28.0
16P	36.0	32.7	30.0

GENERAL TOLERANCE	
0	±0.35
.0	±0.30
.00	±0.20
.000	±0.10

3

4

乔业电子有限公司
 CHYAO YEE CONNECTORS CO., L TD

版本	变更内容	日期	单位	mm	比例	1:1	日期	20130720
----	------	----	----	----	----	-----	----	----------

核准	审核	绘图	品名	PH2.0 卧贴WAFER		
	bolly	许向毅	料号	JVT1125W9T-XXXXR-S		
			图名	005	版本	A