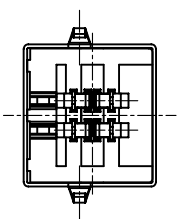
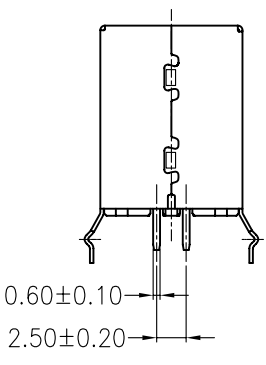
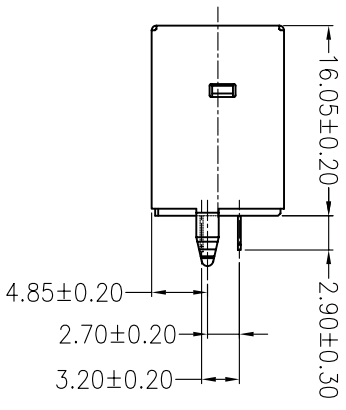
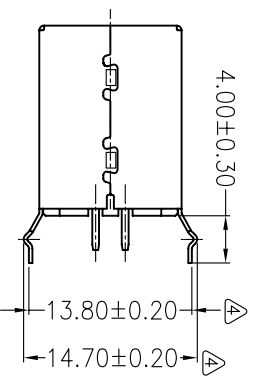
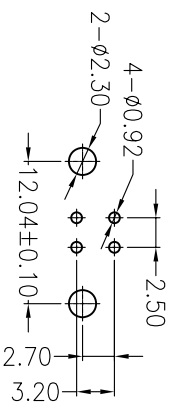
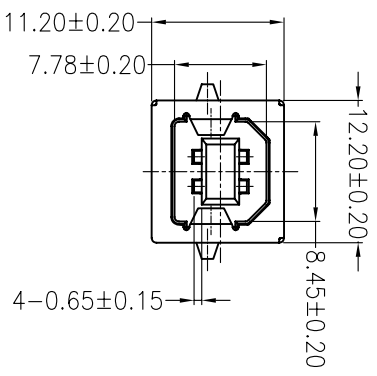
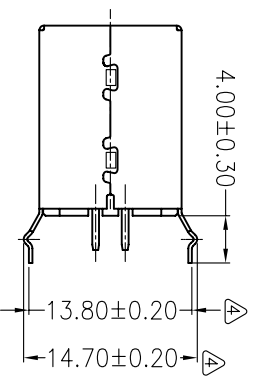


REV	DESCRIPTION	DATE	ECN NO.	CHANGER
A/4	Modify Dim. Tolerance	11.06.16	2011132	Sally
A/5	Modify Drawing	11.12.01	2011256	Bob



- Specification
- 1.Voltage Rating:30V AC
  - 2.Current Rating:1.5AMP.
  - 3.Insulation Resistance:1000M $\Omega$  Min.
  - 4.Contact Resistance:30m $\Omega$  Max.
  - 5.Dielectric Withstanding Voltage:500V AC
  - 6.Temperature Range:-20 $\blacktriangle$ C to +60 $\blacktriangle$ C
  - 7.Insertion Force:35N Max.
  - 8.Extraction Force:10N Min.

P/N NOTE:  
USB-B1D118F-XX4X

Shell plate spec:  
T=Tin plated, N=Nickel plated  
Housing colour:  
B=Black, N=Nature, W=White  
Contact plate spec:  
0=FU", 1=3U", 2=6U",  
3=15U", 4=30U"

NO.	VARIETY	MATERIAL	Q'TY	REMARK
3	Shell	C2680H	1	T=0.30 Plating nickel/Tin
2	Housing	P.B.T	1	UL94V-0 Nature/Black/White
1	Contact	C5191H	4	T=0.25 Plating Gold

RECOMMENDED P.C.B HOLE LAYOUT  
TOP VIEW(TOLERANCE:±0.10)

CZT<sup>®</sup> DONGGUAN ZHENGDE (YIHUA) CONNECTOR CO., LTD

X: ±0.38	X: ±4	UNIT:	DR:	Sally	TITLE:	USB B TYPE(FEMALE)
.X ±0.25	.X ±2	3RD:	DE:	Sally	DIP 180° L=16.1	
.XX±0.20	.XX	SCALE:	CHKD:		SHEET:	1/1
.XXX±0.10	.XXX	REV:	APPD:		D/N:	1114-0118
CUSTOMER DRAWING		REV:	APPD:		M/N:	